

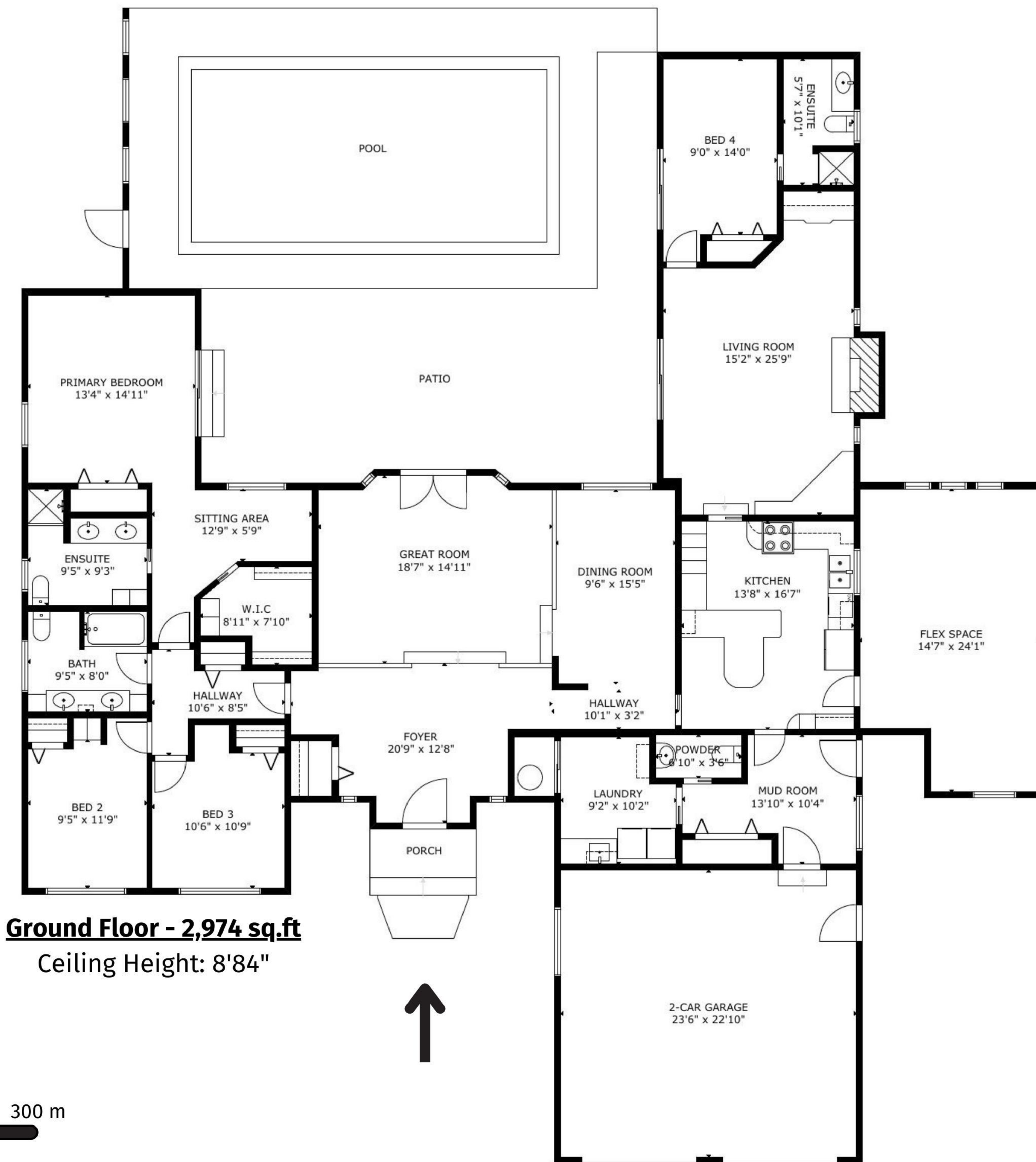


Maria MacCarthy

RE/MAX Wine Capital Realty | 250-498-7970 | maria@winecapitalrealty.com

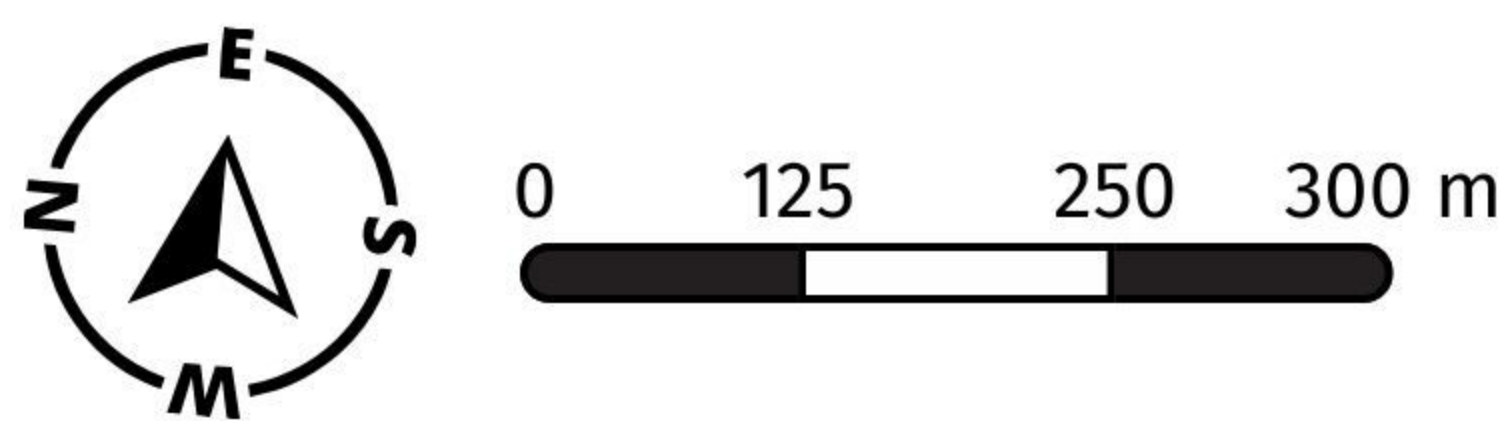
365 Zinfandel Avenue, Oliver, BC

4 BED / 4 BATH



Ground Floor - 2,974 sq.ft
Ceiling Height: 8'84"

Ground Floor:	2,974 sq.ft.
Total Livable SQ.FT:	2,974 sq.ft.
Garage:	536 sq.ft.
Total Extra SQ.FT:	536 sq.ft.
Total SQ.FT:	3,510 sq.ft.



778-955-9601

www.itshomephotography.com

MEASURED ON: (2024-03-07)

Total square foot calculated to gross unit area. SQFT based on interior measurements and not taken from original blueprints, may include unfinished area. This is for marketing purposes only and is not intended for architectural/construction use. All details, sizes & placements should be considered approximate within +/- 2% tolerance.





Maria MacCarthy

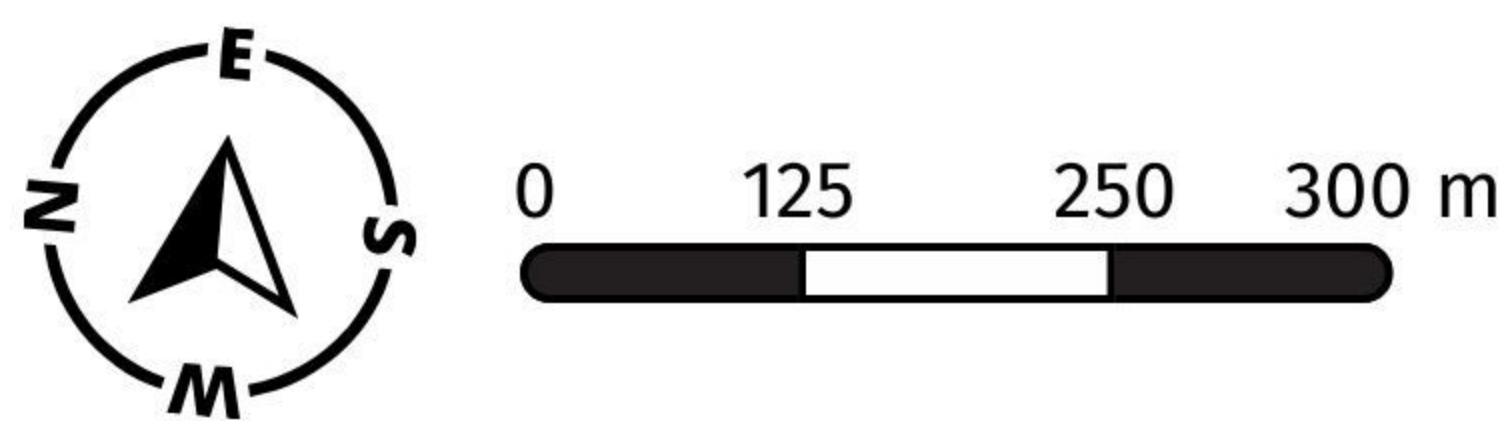
RE/MAX Wine Capital Realty | 250-498-7970 | maria@winecapitalrealty.com

365 Zinfandel Avenue, Oliver, BC

4 BED / 4 BATH



Ground Floor:	2,974 sq.ft.
Total Livable SQ.FT:	2,974 sq.ft.
Garage:	536 sq.ft.
Total Extra SQ.FT:	536 sq.ft.
Total SQ.FT:	3,510 sq.ft.



778-955-9601

www.itshomephotography.com

MEASURED ON: (2024-03-07)

Total square foot calculated to gross unit area. SQFT based on interior measurements and not taken from original blueprints, may include unfinished area. This is for marketing purposes only and is not intended for architectural/construction use. All details, sizes & placements should be considered approximate within +/- 2% tolerance.

